



# Pacemakers and the ECG

Oversensing on the electrocardiogram

---

---

---

---

---

---

## Oversensing



Oversensing can cause symptomatic pauses. So it is important to be able to recognize when it is occurring.

---

---

---

---

---

---

## 3 important clues



---

---

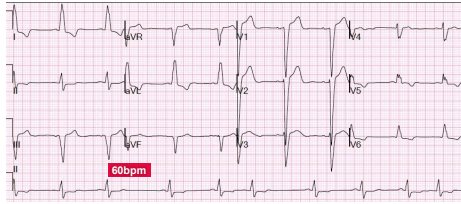
---

---

---

---

Pacemaker base rate of 60 bpm



Slower than base rate

---

---

---

---

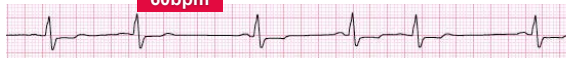
---

---

---

---

60bpm



No pacing spikes?

---

---

---

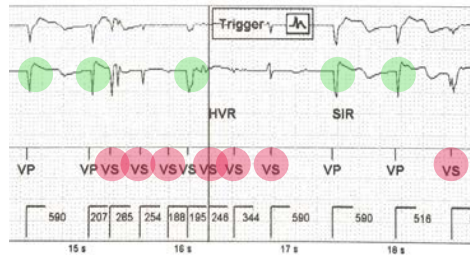
---

---

---

---

---



Excess markers on e-gram

---

---

---

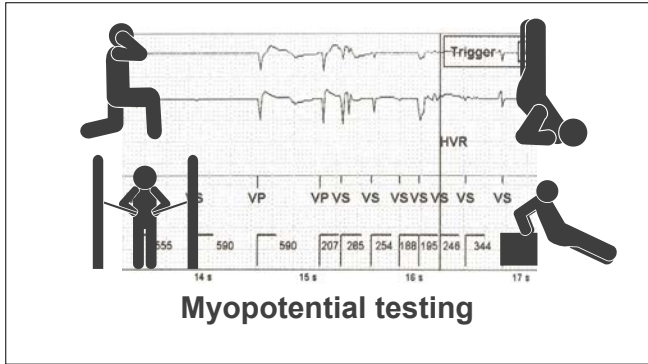
---

---

---

---

---




---

---

---

---


---

---

---

---

### Oversensing



- Below base rate
- Withheld pacing spikes
- Excess markers on e-gram

---

---

---

---

---

---

---

---

### Takeaway message



An ECG slower than the base rate **without** pacing spikes is highly suggestive of **oversensing**

---

---

---

---

---

---

---

---